

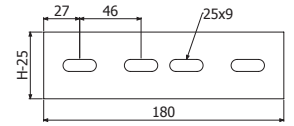


JUFE H60



	H		e	GC	
	mm	inch		REF.	kg/ud
JUFE 60/75	75	2 3/8"	2	2/0854	0,08

4/100 x B2 (2/6792 - GC)

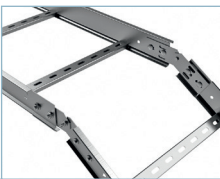
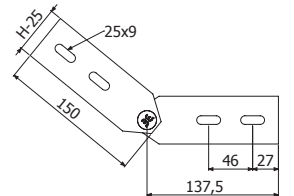


JUFE-A H60



	H		e	GC	
	mm	inch		REF.	kg/ud
JUFE-A 60/75	75	2 3/8"	2	2/0857	0,14

4/100 x B2 (2/6792 - GC)

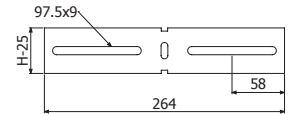


JUFE-B H60

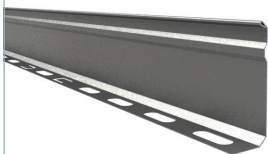


	H		e	GC	
	mm	inch		REF.	kg/ud
JUFE-B 60/75	75	2 3/8"	2	2/0860	0,13

4/100 x B2 (2/6792 - GC)



PS



	H		GS		GC	
	mm	inch	REF.	kg/m	REF.	kg/m
PS 35	35	1 3/8"	2/3476	0,29	2/3479	0,29

B2 - L=3m→3/100 (2/6792)

PS 35→ H60.

L = 3 m (10 ft)

